

NOTES:

- ① MAT'L: COPPER (STOCK TKN. $\frac{1.02}{040} \pm .001$)
PLATING: ELECTRO TIN (.0003 MIN)
 - ② TIN-PLATED BRASS FUNNEL FERRULE
 - ③ NYLON INSULATION (COLOR CODED YELLOW)
- STUD SIZES: ($\pm .005$)
- 02 = .094
 - 04 = .119
 - 06 = .146
 - 08 = .173
 - 10 = .198
 - 14 = .265
 - 56 = .328
 - 38 = .390
- "UL" LISTING #E32244
"CSA" LISTING #18689
- WIRE SIZE: 12 - 10 AWG²
4.0 - 6.0 MM²

ALL DIMENSIONS = $\frac{\text{INCHES}}{\text{MM}}$ (MWID) = DENOTES MAXIMUM WIRE INSULATION DIAMETER

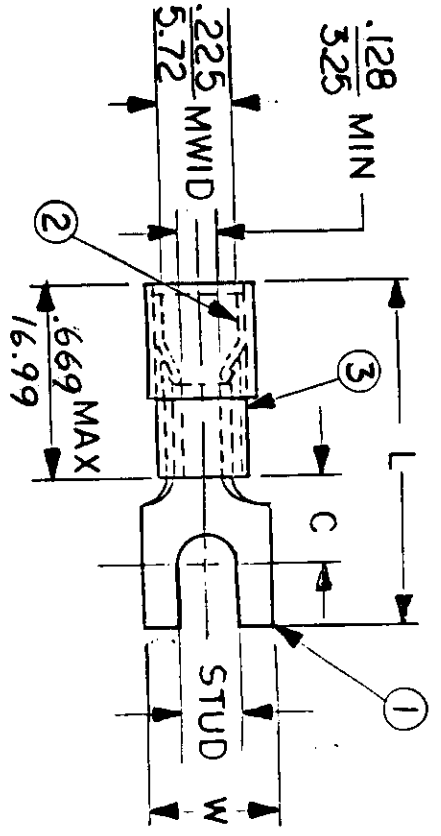


FIG. NO. C-CD-503 - 01

PART NUMBER	"W" ±.010	"C" MIN.	"L" MAX.	AVAILABLE STUD SIZES
C-5102	$\frac{.415}{10.41}$	$\frac{.305}{7.75}$	$\frac{1.204}{30.58}$	08
C-5105-	$\frac{.320}{8.13}$	$\frac{.305}{7.75}$	$\frac{1.204}{30.58}$	06

DIMENSIONAL TOLERANCES UNLESS OTHERWISE SPECIFIED		REFERENCE	SCALE: NTS	DATE	TITLE:
FRAC.	DEC.	ANG.	DRWN. BY: JJ	11.15.84	SPADE TONGUE TERMINAL AVIKRIMP 500-SERIES
±	±	±	CHKD. BY: GZ	11.26.84	
±	±	±	APPRD. BY:		DWG. NO. A CUSTOMER DWG

