

Tous droits strictement réservés. Reproduction ou communication à des tiers interdite sans quelque forme que ce soit sans autorisation écrite du propriétaire. Propriété de c FCI. Droits de reproduction FCI.



PDM: Rev:A

STATUS: Released

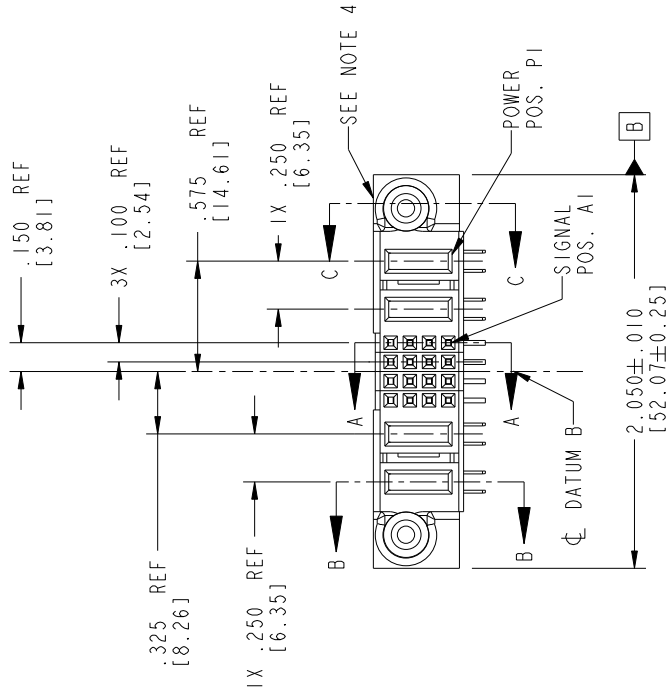
Printed: Dec 20, 2010

1 | 2

3 |

4

PRODUCT NO.	ROWS	POWER SGN POWER			
		P4	P3	P2	P1
51770-021 NOTE 3	D	HHHH	HHHH	PC	E1
	C	GGGG	GGGG	PA	PC
	B	FFFF	FFFF	PA	PC
	A	EEEE	EEEE		



mat'l code		SEE NOTE 2		tolerances unless otherwise specified		CUSTOMER		A FCI	
lhr	ecm no.	dr	date	linear	angles	dr	engr	chr	appd
A	DG05-0189	LH	06/24/05	$.XX \pm .01/0.X \pm 0.3$	$0 \pm 2^\circ$				
				$.XX \pm .005/0.XX \pm 0.13$		LH	06/24/05	VICTOR LIM	JOSEPH HSIA
				$.XXX \pm .0020/0.XXX \pm 0.051$		LH	06/24/05		
sheet index	revision	A	A	A	A	A	A	A	A
	sheet	1	2	3	4				

CODE	DIM "M" MATING LENGTH	CONTACT TYPE
PA	.042 [1.07]	POWER
H	N/A [N/A]	SIGNAL
G	N/A [N/A]	SIGNAL
F	N/A [N/A]	SIGNAL
E	N/A [N/A]	SIGNAL
PC	.092 [2.34]	POWER

All rights strictly reserved. Reproduction or issue to third parties in any form whatever is not permitted without written authority from the proprietor. Property of FCI. Copyright FCI.

1 | 2

3 |

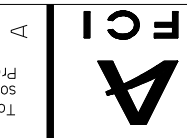
4

Pro/E

22526

PRODUCT NUMBER  
51770-021--  
NOTE (3)

Tous droits strictement reserves. Reproduction ou communication a des tiers interdite  
sous quelque forme que ce soit sans autorisation ecrite du proprietaire.  
Propriete de c FCI. Droits de reproduction FCI.



PDM: Rev:A

STATUS: Released

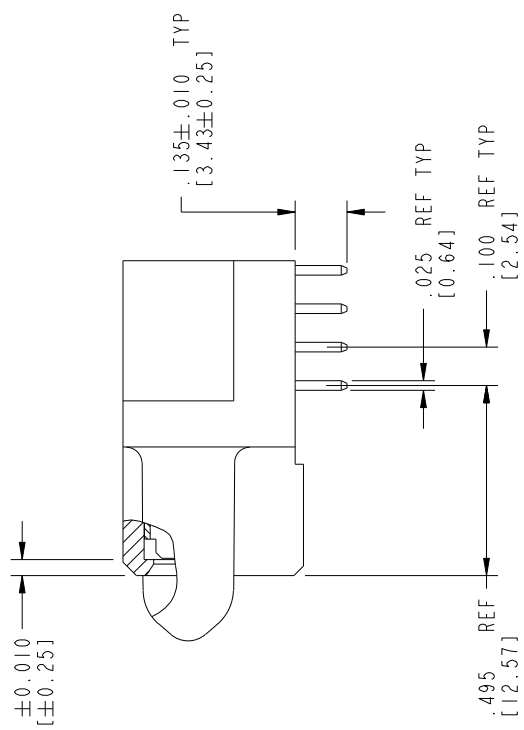
Printed: Dec 20, 2010

All rights strictly reserved. Reproduction or issue to third parties in any form whatever is not permitted without written authority from the proprietor.  
Property of FCI. Copyright FCI.

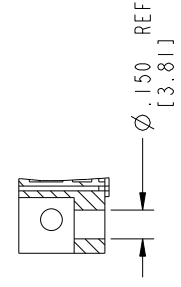
1 | 2

3 |

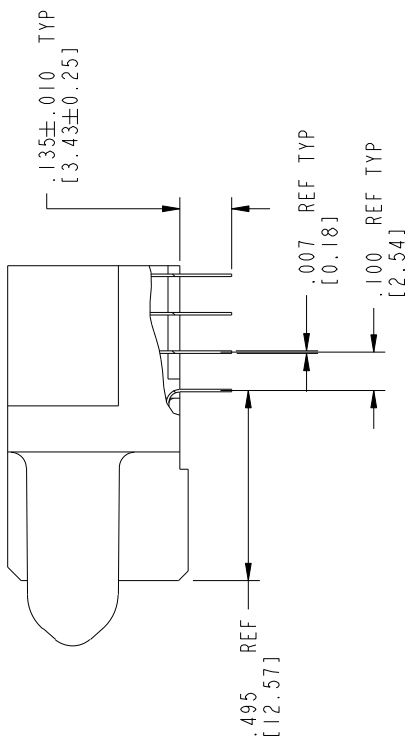
4



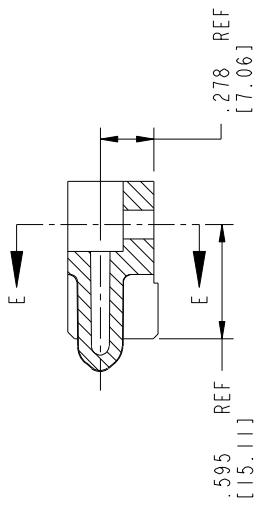
BROKEN-OUT SECTION B-B  
SCALE 2:1



PARTIAL SECTION E-E



BROKEN-OUT SECTION A-A  
SCALE 2:1



SECTION C-C

mat'l code		SEE NOTE 2		Tolerances unless otherwise specified		CUSTOMER		A FCI	
lir	ecn no.	dr	date	linear	.XX±.01/0.X±0.3	COPY	title	www.fciconnect.com	
A				angles	.XX±.005/0.XX±0.13	projection	R/A SOLDER RECEPTACLE		
				dr	.XXX±.0020/0.XXX±0.051	INCH/MM	product family	2P + 16S + 2P	
				engr	0 ± 2°	scale	PwrBl code	code	
				chr	LH 06/24/05	1:1	size	213	
				appd	LH 06/24/05		sheet	2 of 4	
sheet index	revision	sheet			JOSEPH HSI A 06/24/05		A	51770-021	
								cage code 22526	

1 | 2

3 |

4

A

B



PRODUCT NUMBER  
51770-021  
NOTE 3

NOTES:

1. DIMENSIONS AND TOLERANCES ARE IN ACCORDANCE WITH ASME Y14.5M, 1994 UNLESS OTHERWISE SPECIFIED.

CONNECTOR NOTES:

- 2. HOUSING MATERIAL: UL 94 V-0 GLASS FILLED  
HIGH-TEMP THERMOPLASTIC  
POWER CONTACT MATERIAL: COPPER ALLOY  
SIGNAL PIN MATERIAL: COPPER ALLOY
- 3. PLATING:  
51770-021: SIGNAL PIN: 30u" / 0.76um Au OVER 50u" / 1.27um Ni ON THE WHOLE AREA  
AND 100u" / 2.54um SnPb OVER 50u" / 1.27um Ni ON THE TERMINATION AREA  
POWER PIN: 30u" / 0.76um Au OVER 50u" / 1.27um Ni ON THE CONTACT AREA  
AND 100u" / 2.54um SnPb OVER 50u" / 1.27um Ni ON THE TERMINATION AREA
- 51770-021LF: SIGNAL PIN: 30u" / 0.76um Au OVER 50u" / 1.27um Ni ON THE WHOLE AREA  
AND 78u" / 2.00um Sn OVER 50u" / 1.27um Ni ON THE TERMINATION AREA  
POWER PIN: 30u" / 0.76um Au OVER 50u" / 1.27um Ni ON THE CONTACT AREA  
AND 78u" / 2.00um Sn OVER 50u" / 1.27um Ni ON THE TERMINATION AREA

PART NUMBER 51770-021LF MEETS EUROPEAN UNION DIRECTIVE AND OTHER COUNTRY REGULATIONS AS DESCRIBED IN GS-22-008. THE HOUSING WILL WITHSTAND EXPOSURE TO 260° PEAK TEMPERATURE FOR 10 SECONDS IN A WAVE SOLDER APPLICATION WITH A CIRCUIT BOARD.

- 4. MANUFACTURER'S NAME, P/N, AND DATE CODE TO APPEAR ON THIS SURFACE.
- 5. PRODUCT SPECIFICATION GS-12-149.
- 6. APPLICATION SPECIFICATION BUS-20-067.
- 7. PACKAGED IN TRAYS.

PCB NOTES:

- 8. ALL HOLE DIAMETERS ARE FINISHED HOLE SIZE.
- 9. MOUNTING HOLES, WHERE APPLICABLE, ARE UNPLATED.
- 10. Ø .0453±.0010 [1.151±0.025] DRILLED HOLES PLATED WITH .0003 [0.008] MIN SnPb OVER .001 [0.03] TO .003 [0.08] Cu PLATING TO ACHIEVE Ø .040±.003 [1.02±.07] HOLE.
- 11. "DIM XXX" TO BE DETERMINED BY THE CUSTOMER.
- 12. CONNECTOR KEEP-OUT ZONE.

mat'l code		SEE NOTE 2		Tolerances unless otherwise specified		CUSTOMER		A FCI	
thr	ecm no.	dr	date	linear	angles	projection	scale	title	www.fciconnect.com
A				.XX±.01/0.X±0.3	0 ± 0°	projection	1:1	R/A SOLDER RECEPTACLE	
				.XX±.0020/0.XX±0.051		INCH/MM		product family	
						scale		size	
								dwg no	
								PwrBl code	
								sheet	
								4 of 4	
sheet index	revision	sheet							

Tous droits strictement reserves. Reproduction ou communication a des tiers interdite sans queique forme que ce soit sans autorisation ecrite du proprietaire. Propriete de c FCI. Droits de reproduction FCI.



All rights strictly reserved. Reproduction or issue to third parties in any form whatever is not permitted without written authority from the proprietor. Property of FCI. Copyright FCI.